

Camloc . Delron . Deutsch . Huck . K-Fast . Kaynar . Microdot . RAM . Rosan . Screwcorp . Tridair . Voi - Shan

MANUFACTURE OF THE PROPRIETARY PARTS SHOWN HERE WITHOUT WRITTEN CONSENT IS ABSOLUTELY PROHIBITED

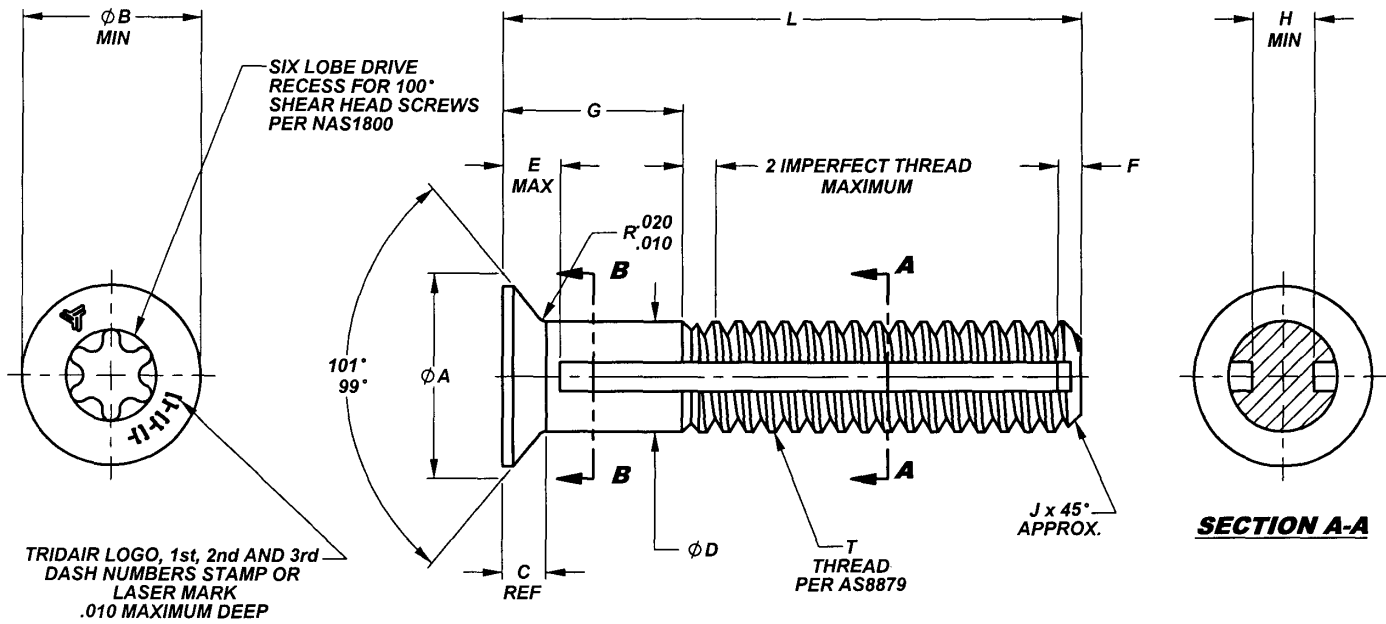


TABLE 1

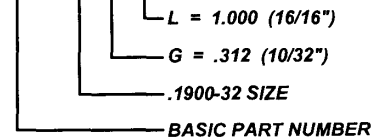
FIRST DASH NUMBER	T THREAD SIZE	phi A	phi B MIN	C REF	phi D	E MAX	F	J	H MIN	ULTIMATE TENSILE STRENGTH MINIMUM (CALCULATED)	ULTIMATE SHEAR STRENGTH MINIMUM ACROSS A-A (CALCULATED)	ULTIMATE SHEAR STRENGTH MINIMUM ACROSS B-B (CALCULATED)
-10	.1900-32UNJF-3A	.357 .349	.310	.070	.1895 .1885	.100	.040	.030	.108	2,194	1,450	1,950

TABLE 2

G GRIP							L LENGTH
.125	.156	.187	.218	.250	.281	.312	
-4-7	-5-7	-6-7	-7-7	-8-7	-----	-----	.437
-4-8	-5-8	-6-8	-7-8	-8-8	-9-8	-----	.500
-4-9	-5-9	-6-9	-7-9	-8-9	-9-9	-10-9	.562
-4-10	-5-10	-6-10	-7-10	-8-10	-9-10	-10-10	.625
-4-11	-5-11	-6-11	-7-11	-8-11	-9-11	-10-11	.687
-4-12	-5-12	-6-12	-7-12	-8-12	-9-12	-10-12	.750
-4-13	-5-13	-6-13	-7-13	-8-13	-9-13	-10-13	.812
-4-14	-5-14	-6-14	-7-14	-8-14	-9-14	-10-14	.875
-4-15	-5-15	-6-15	-7-15	-8-15	-9-15	-10-15	.937
-4-16	-5-16	-6-16	-7-16	-8-16	-9-16	-10-16	1.000
-4-17	-5-17	-6-17	-7-17	-8-17	-9-17	-10-17	1.062
-4-18	-5-18	-6-18	-7-18	-8-18	-9-18	-10-18	1.125
-4-19	-5-19	-6-19	-7-19	-8-19	-9-19	-10-19	1.187
-4-20	-5-20	-6-20	-7-20	-8-20	-9-20	-10-20	1.250
-4-21	-5-21	-6-21	-7-21	-8-21	-9-21	-10-21	1.312
-4-22	-5-22	-6-22	-7-22	-8-22	-9-22	-10-22	1.375
-4-23	-5-23	-6-23	-7-23	-8-23	-9-23	-10-23	1.437
-4-24	-5-24	-6-24	-7-24	-8-24	-9-24	-10-24	1.500
-4-25	-5-25	-6-25	-7-25	-8-25	-9-25	-10-25	1.562
-4-26	-5-26	-6-26	-7-26	-8-26	-9-26	-10-26	1.625
-4-27	-5-27	-6-27	-7-27	-8-27	-9-27	-10-27	1.687
-4-28	-5-28	-6-28	-7-28	-8-28	-9-28	-10-28	1.750

NOTES; UNLESS OTHERWISE SPECIFIED:

- MATERIAL:
1.1 TITANIUM, TI-6AL-4V PER AMS4928, AMS4967 AND/OR AMS4930.
- HEAT TREAT (AS REQUIRED TO MEET PROPERTIES):
2.1 160 KSI TENSILE STRENGTH MINIMUM.
- FINISH: NONE.
- SCREW TO BE USED WITH CA2210-()R RETAINING RING TO CAPTIVATE TO PANEL.
- PANEL PREPARATION: REFER TO CAL-STD-0260 DRAWING.
- INSTALLATION: REFER TO CA2210T-() DRAWING.
- LONGER GRIPS (1/32" INCREMENTS) AND LONGER LENGTHS (1/16" INCREMENTS) THAN ARE SHOWN IN TABLE 2 MAY BE ORDERED.
- PART CALLOUT EXAMPLE:
9.1 CA22081-10-10-16



INTERIM DOCUMENT REVISION		
Rev.	Date	DAF #
New	10/21/10	9430

INTERIM DOCUMENT REVISION		
Rev.	Date	DAF#
New	10/8/2018	117431

SCANNED

APPROVED DATE
16 SEP 09

REV. LETTER AND DATE
NEW 16 SEP 09

DAF NUMBER
DAF 09721

CURRENT DESIGN ACTIVITY:
ARCONIC
Arconic Fastening Systems
TRIDAIR PRODUCTS
3000 W. LOMITA BLVD.
TORRANCE, CA 90505

TITLE:
CAPTIVE SCREW
100° FLUSH HEAD, 6 LOBE RECESS
TI-6AL-4V 160 KSI

UNLESS OTHERWISE SPECIFIED
DIMENSIONS ARE IN INCHES &
ASME Y14.5M TOLERANCES:

ANGLES
DECIMALS = ±.3°
 .XX = ±.02
 .XXX = ±.010

CURRENT DESIGN ACTIVITY:
CAGE CODE: 29372
SALES DRAWING NO.
CA22081-()-()-()
SHEET 1 OF 1

PROJECT NUMBER: 09-027